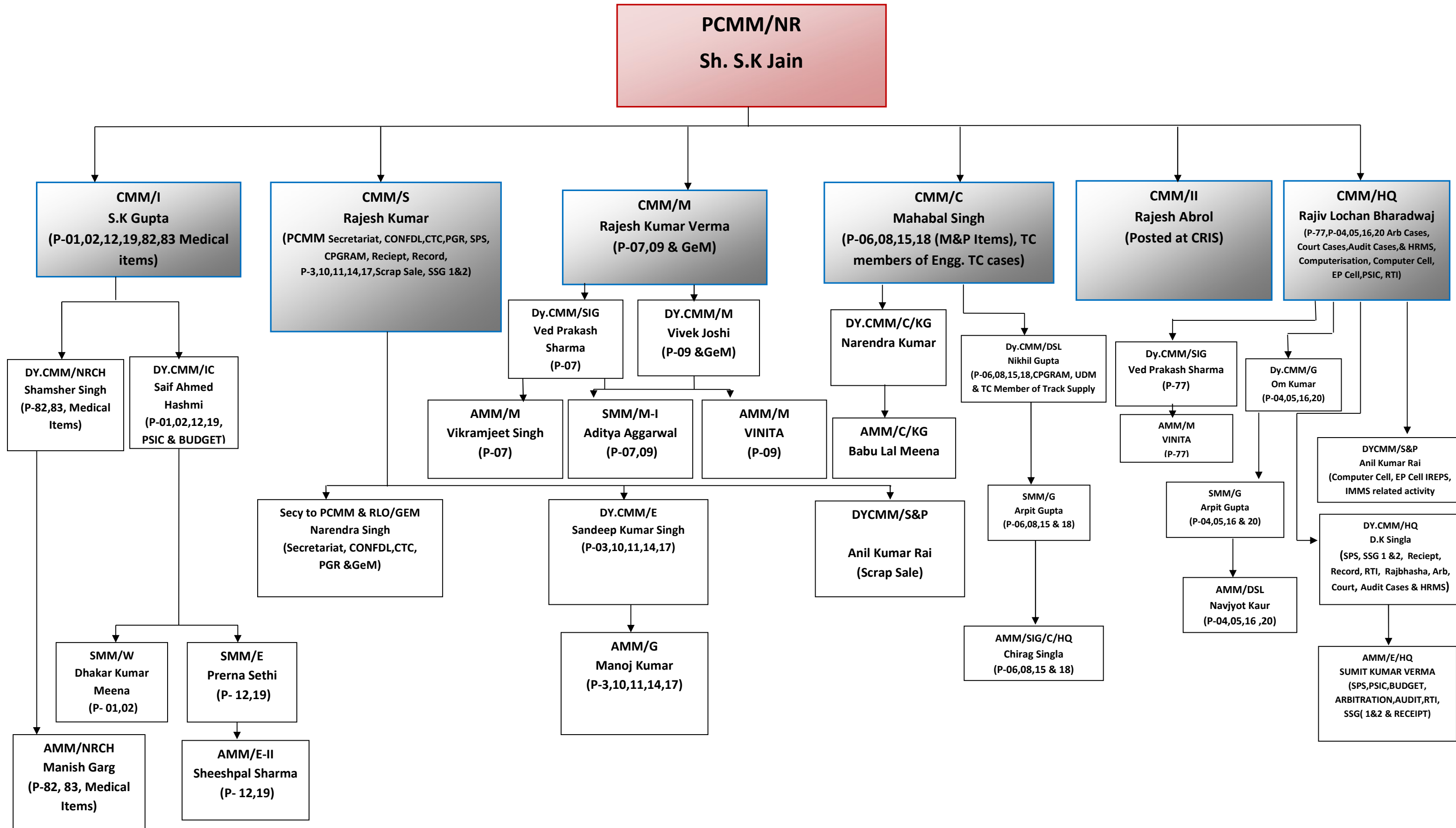


# ORGANISATION HIERARCHY (NORTHERN RAILWAYS HEADQUARTER OFFICE)

(updated as on 28.08.2023)



**Duty list of Key Supervisors (HQ)**

<u>ELECTRICAL</u>		<u>GENERAL ITEMS</u>		<u>SIGNAL</u>		<u>MECHANICAL</u>		<u>DIESEL</u>	
PO1	CH.OS	<b>P03</b>	CH.OS	<b>P06</b>	CH.OS	<b>P07</b>	CH.OS	<b>P04</b>	CH.OS
P02	CH.OS	<b>PIO</b>	CH.OS	<b>P08</b>	CH.OS	<b>P09</b>	CH.OS	<b>P05</b>	CH.OS
P12	CH.OS	<b>P11</b>	CH.OS	<b>P15</b>	CH.OS	<b>ENGINEERING</b>		<b>P16</b>	CH.OS
P19	CH.OS	<b>P14</b>	CH.OS	<b>P18</b>	CH.OS	<b>P-77</b>	CH.OS	<b>P20</b>	CH.OS
GENERAL SECTION									
RTI	CH.OS	<b>EP CELL</b>	CH.OS	<b>SALE</b>	CH.OS				
SPS	CH.OS	<b>COMPTURER CELL</b>	CH.OS	<b>ARBITRATION</b>	CH.OS				
SSG-I	CH.OS	<b>PSIC</b>	CH.OS	<b>PGR</b>	CH.OS				
SSG-II	CH.OS	<b>RECIEPT</b>	CH.OS	<b>TENDER OPENING CELL</b>	CH.OS				